

The Serenica is Esthetica's luxury multi-purpose pedicure spa chair, crafted from American Oak wood and designed for high-end salons and spas offering a broad range of services. An electronically adjustable backrest and manually retractable pedicure station allow the chair to transition seamlessly between pedicure, facial, and hair blow-dry treatments. A detachable iPad holder, hairdryer stand with Schneider plug point, and USB-A and USB-C charging ports complete a chair that is as thoughtfully equipped as it is beautifully made.



# KEY FEATURES



## Retractable Pedicure Station

The Serenica's pedicure tub slides out smoothly on a retractable mechanism, converting the chair from a fully equipped pedicure station to a clean, uncluttered seat for facials, manicures, or hair treatments — making it one of the most versatile chairs in any salon or spa.

## Detachable iPad Holder

The Serenica features a detachable iPad holder designed to enhance convenience and comfort during beauty and wellness treatments. Thoughtfully integrated for easy accessibility, it allows clients to stay relaxed and entertained while supporting a seamless treatment experience.

## Electronically Adjustable Backrest

The Serenica's electronically controlled backrest allows therapists to recline the guest to the precise position required for each treatment — from an upright seating position to a more reclined angle for facials and blow-dries.

## Veridura Phthalate-Free Upholstery

Available in Veridura Phthalate-Free Upholstery, designed for professional spa environments, offering a safer surface for both clients and therapists. It resists stains, acetone, and disinfectants, withstands frequent cleaning, and ensures durable, fire- and abrasion-resistant performance.

## FEATURES

Backrest	Electronically Adjustable
Headrest	Manually Retractable
Pedicure Station	Retractable Station with Slide-In Tub
Footrest	Additional Foot Pedestal on Pedicure Tub
Additional	Integrated Hairdryer Stand Schneider Plug Point USB-A & USB-C Charging Ports

## TECHNICAL SPECIFICATIONS

Length	2030 mm / 79.9 in
Width	840 mm / 33 in
Height	1250 mm / 49.2 in
Angle	40°

## ELECTRICAL PARAMETERS

Power in (Mains Power Supply)	100–240V, 50–60Hz, 3A
IPX Rating	IPX6
Operating Temperature	10–40°C
Shock Protection:	Class I

## BASE & FRAME

Base	Powder-coated mild steel frame
Safe Working Load	250 kgs
Load Bearing capacity	180 kgs

## SAFETY STANDARDS

General Safety Standards	IEC 60601-1
EMI/EMC	IEC 60601-2

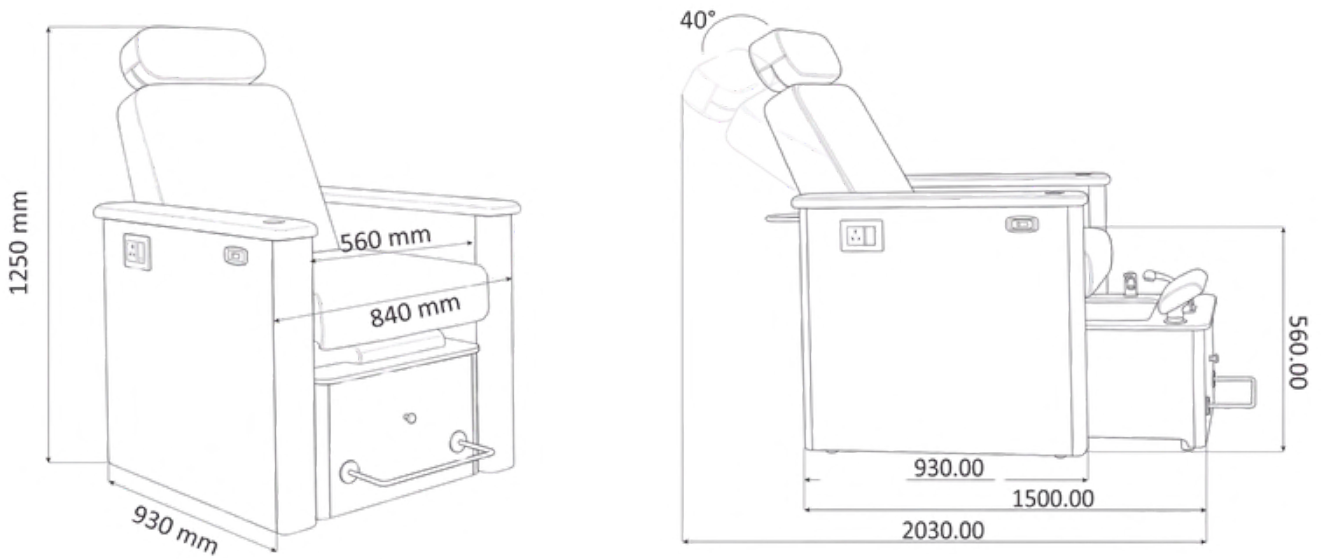
## UPHOLSTERY

Type	Veridura Phthalate-Free Upholstery
Thickness	1 mm
Tensile Strength	ISO 1421, 869.22 N/ 5 cm
Colour Options	Cream, Beige, Mouse Grey, Brown, Charcoal Grey
Weight	726.7 g / sqmt
Abrasion	ISO 5470-2 = 2,00,000 cycles / min

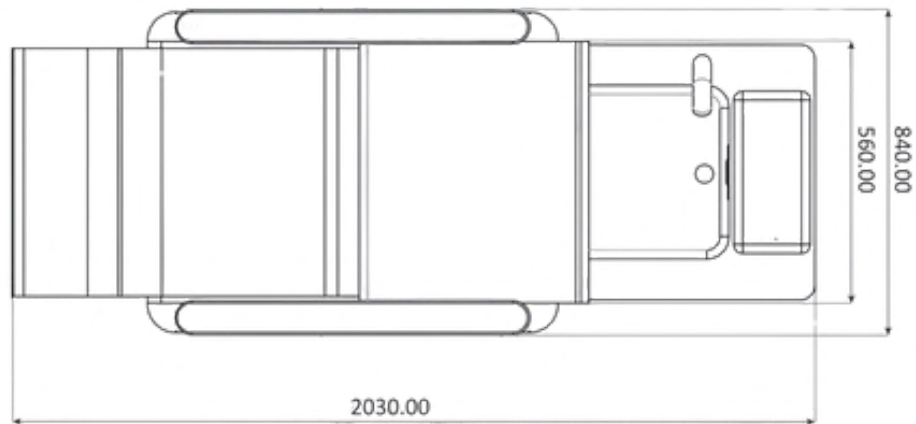
## WARRANTY

Motors	2 years
Frame	5 years

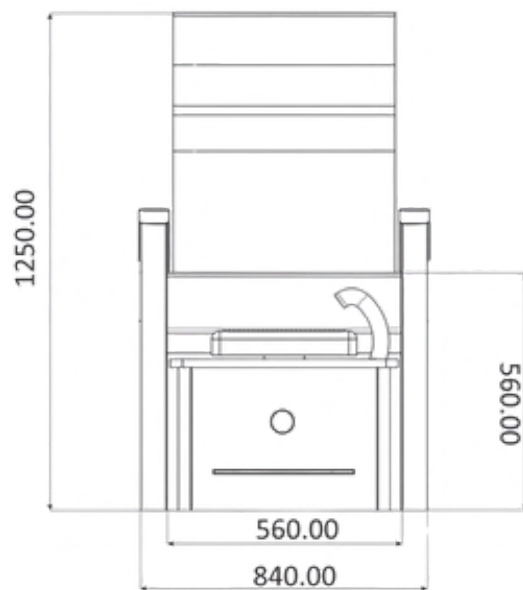
# TECHNICAL DRAWINGS



SIDE VIEW



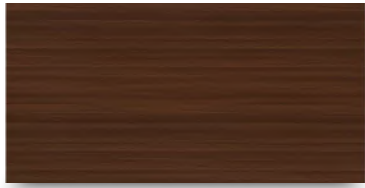
TOP VIEW



FRONT VIEW

ALL DIMENSIONS ARE IN MM

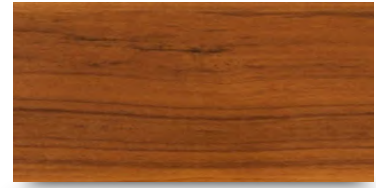
## WOOD FINISH OPTIONS



American Oak  
Dark Walnut



American Oak  
Wenge



American Oak  
Yellow Teak



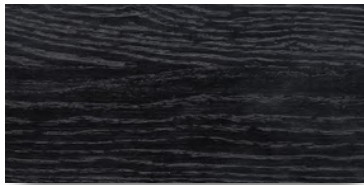
American Oak  
White Wash Finish



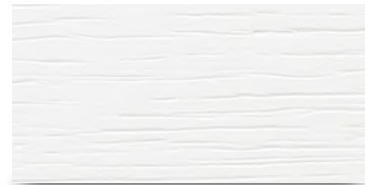
American Oak  
Water Base



American Oak  
PU Finish

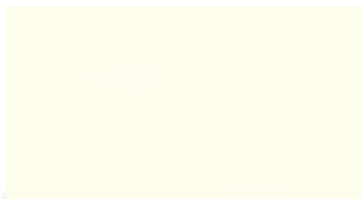


American Oak  
Open Pore Black

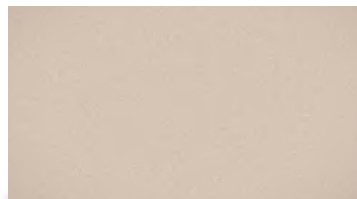


American Oak  
Open Pore White

## VERIDURA PHTHALATE-FREE UPHOLSTERY



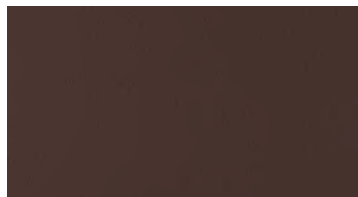
Cream



Beige



Mouse Grey



Brown



Charcoal Grey



Phthalate-Free



Fire Retardant



Oil Resistant



Alcohol Resistant



Ultra Soft



Stain Resistant



Anti Bacterial



Eco - Friendly