

The Multipurpose Ayurveda Table is Esthetica's traditional Ayurvedic treatment table, purpose-built for practitioners seeking an authentic Ayurvedic experience. Crafted from solid and engineered wood by skilled Indian craftsmen, it is designed for Ayurvedic oil massages, Abhyanga treatments, and Shirodhara — with brass ornamentation on the handles and hand-carved detailing on the legs and side frame bringing a richness that elevates any Ayurvedic setup. Interchangeable mattresses and headrests allow the table to adapt seamlessly across treatment types, making it as versatile as it is refined.



KEY FEATURES



Hand-Carved Detailing with Brass Ornamentation

Each table is hand-crafted by skilled Indian craftsmen, with intricate carvings on the wooden legs and side frame and brass ornamentation on the handles — bringing an authentic traditional aesthetic to any Ayurvedic treatment room.

Solid Wood & Engineered Wood Construction

Built on a frame of solid and engineered wood, the table is designed to withstand the demands of daily professional use while retaining the warmth and character of traditional Ayurvedic furniture.

Interchangeable Mattresses for Multiple Treatment

The table comes supplied with both a thin mattress for Abhyanga oil massage and a thick cushion for normal dry massages, along with wooden and cushioned headrests — allowing practitioners to switch between treatments without needing a separate table.

Flat Top Design

The flat top construction provides a stable, even surface across the full length of the table — essential for Ayurvedic oil massages and Shirodhara treatments where precise positioning and an uninterrupted surface are critical.

CURATED ACCESSORIES



FEATURES

Design	Flat Top Design Brass ornamentation on the handles Hand craving on the wooden legs and side frame
Foam Cushion	12 mm and 50 mm Upholstered Mattresses
Accessories	1 x Wooden Headrest for shirodhara treatment 1 x Cushioned Headrest for normal dry massages 1 x Thin mattress used for abhyanga oil massage 1 x Thick cushion for normal dry massages

TECHNICAL SPECIFICATIONS

Length	2315 mm / 91.1 in
Width	882 mm / 34.7 in
Height	776 mm / 30.5 in

BASE & FRAME

Base	Solid wood and Engineeres wood construction
Safe Working Load	250 kgs
Load Bearing capacity	180 kgs

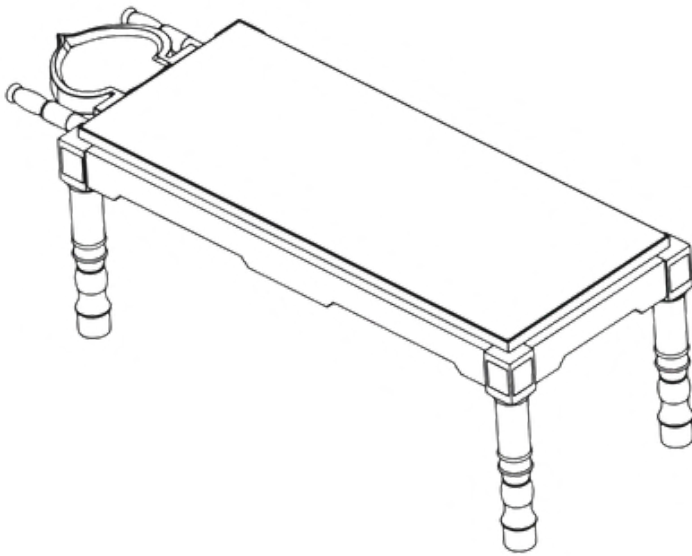
UPHOLSTERY

Type	Phthalate-Free Upholstery
Thickness	1.01 mm
Tensile Strength	ISO 1421, 804 N/ 5 cm
Colour Options	Cream, Beige, Mouse Grey, Brown
Weight	732 g / sqmt
Abrasion	ISO 5470-2 = 2,00,000 cycles / min

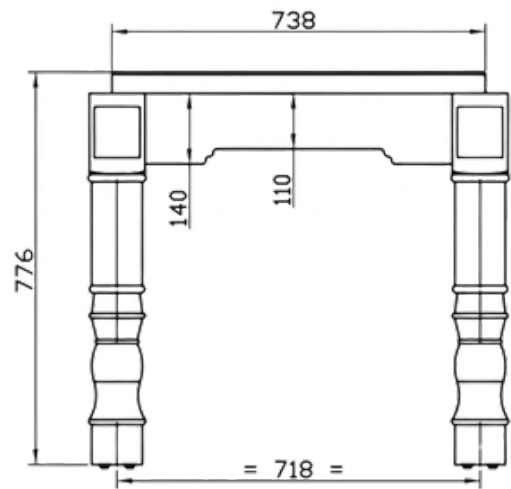
WARRANTY

1 year againts any manufacturing defects

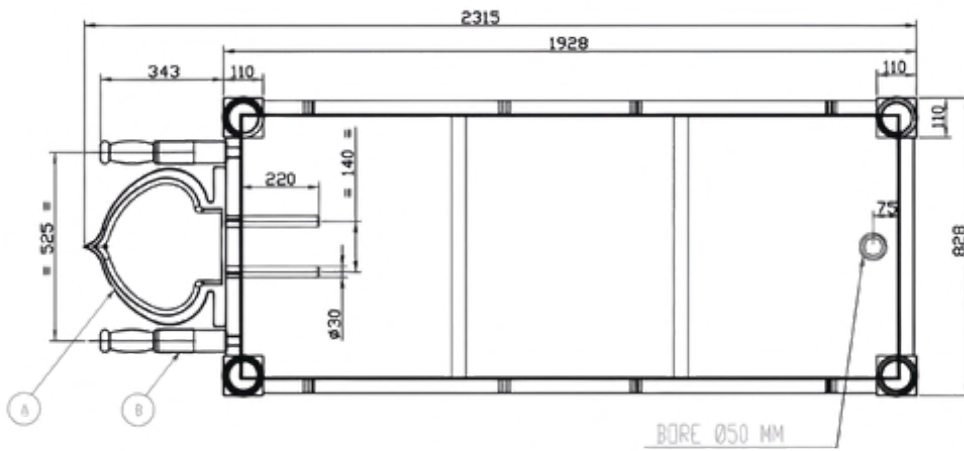
TECHNICAL DRAWINGS



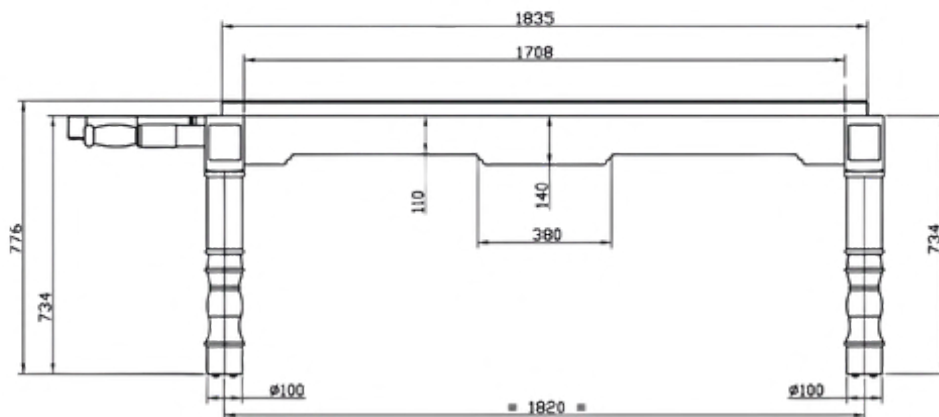
ISOMETRIC VIEW



FRONT VIEW



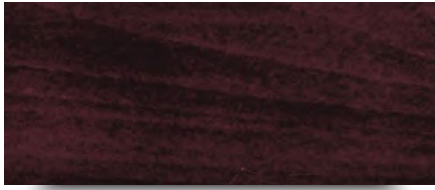
TOP VIEW



SIDE VIEW

ALL DIMENSIONS ARE IN MM

WOOD FINISH OPTIONS



Dark Walnut



Wenge

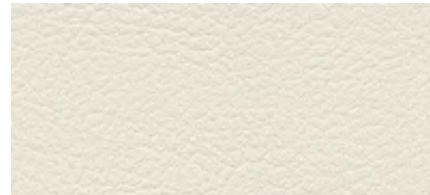


Yellow Teak

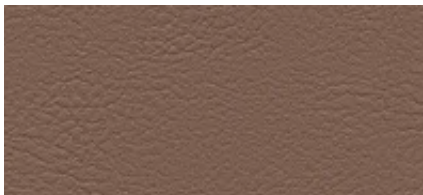
PHTHALATE-FREE UPHOLSTERY



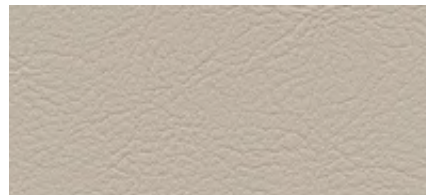
Cream



Beige



Brown



Mouse Grey



Black